

EFFECT LACQUERS



Everybody, who wants to produce interior completion with individuality, spirit of the times and feeling, is using effect lacquers. Effect lacquers are creative formulations, providing imaginative possibilities in the field of surface design.

Effect lacquers are available in a great optical variety and in different qualities. They offer to the user a multitude of design possibilities, because with the right feeling for colours and expression, incredible pictures can be produced.

Many of the specified effects can be realised as behind-glass-coatings, as well. See our special pages 74/75 glass lacquers.

Original-effect samples are available in our staincard „Effects“, which we you can get against a protective charge.

Hesse PUR-Metallic Effect lacquers

Metallic base lacquer, silver, opaque, brilliant, light fast. Mixable up to 50 % with Hesse PUR Colour lacquer DB 555-colour tone (except for white).

Fields of application

Decorative interior design, furniture surfaces on suitable base coats.

Processing example

Accents, pastel green metallic, high gloss

- Carrier: MDF board, treated with filler
- Drying for at least 16 h at 20°C
- Lacquer sanding with grain 400 - 600
- 1 x 80 - 120 g/m² Hesse Metallic lacquer DB 46014-M0999 + 10 % DB 555-104 Mixture 10 : 1 with PUR-Hardener DR 470 + 30-40 % DV 490
- Intermediate drying 1 - 3 h
- 2 x finishing in an interval of 20 - 60 min Hesse PUR-Acrylic-Brilliant lacquer DU 429 Further treatment see page 39

Technical data

Mixture: **10:1 with Hesse PUR-Hardener DR 470**

Working viscosity:

15 - 18 sec / DIN 4 mm / 20°C

Processing time: 1 work day at 20°C

Pot life: 1 work day at 20°C

Application

By spraying: Best result is achieved by cup gun, airless and airmix.

Please check with regard to the object!

Air spraying (cup)

Nozzle size: 1,8 - 2,0 mm

Spray pressure: 2,5 - 3,5 bar

Important advices

Depending on desired surface and carrier, previous base coating with e.g. DP 491-9343, DP 492-9343 or other suitable pigmented systems is possible. If absolute resistance to metallic rings and to colour abrasion or another degree of gloss is desired, please recoat e.g. with Hesse PUR Multicoat lacquers DE 55., DE 56. or PUR Acrylic Brilliant lacquer after max. 4 h without previous sanding.

Order information

Order-No.:

fine **DB 46014-M0999**

coarse **DB 46004-M0900**

Packaging sizes: 5/10/25 litres

Efficiency per litre: 4 - 6 m² per work step including overspray

Order-No. thinner: **DV 490, DV 494**

Retarder: **DV 499**, addition max. 5 %

Cleaning agent: **DV 4916**

Colour tones: **DBM 46014-colour tone** and **DBM 46004-colour tone** are available at your Hesse retailer in many colour tones.

Hesse PUR Metallic lacquer,

Opaque, two-component PUR-Multicoat lacquers based on acrylates, light fast. Regular effect formation, fast drying, good brilliance.

Fields of application

Decorative interior completion and furniture surfaces.

Processing example

Interior decoration, metallic sparkling silver

- Carrier: MDF panel, treated with filler
- Drying at least for 16 h at 20°C
- Lacquer sanding with grain 400 - 600
- 1 x coating with 100 - 120 g/m² Hesse Metallic-Lacquer DB 42634-M0133 Mixture 10 : 1 with PUR-Hardener DR 4070 + 30 - 40% DV 490
- 1 x finishing with Hesse PUR Multicoat lacquer DE 557
- Further treatment see on page 32

Technical data

Mixture:

10 : 1 with Hesse PUR-Hardener DR 4070

Working viscosity: 15-18 sec / DIN 4 mm / 20 °C

Processing time: 1 workday at 20°C

Pot life: 1 workday at 20°C

Application

By spraying: Best result is achieved by cup gun, airless and airmix.

Please check with regard to the object!

Air spraying (cup)

Nozzle size: 1,8 - 2,0 mm

Spray pressure: 2,5 - 3,5 bar

Important advices

Depending on desired surface and carrier, previous base coating with e.g. DP 491-9343, DP 492-9343 or other suitable pigmented systems is possible. If absolute resistance to metallic rings and to colour abrasion or another degree of gloss is desired, please recoat e.g. with Hesse PUR Multicoat lacquers DE 55., DE 56. or PUR Acrylic Brilliant lacquer after max. 4 h without previous sanding.

Order information

Order no.:

steel **DB 42634-M0132**

sparkling silver **DB 42634-M0133**

aluminium **DB 42634-M0134**

silver **DB 42634-M0136**

platinum **DB 42634-M0137**

gold **DB 42634-M0138**

red-gold **DB 42634-M0139**

brass **DB 42634-M0140**

copper **DB 42634-M0141**

Further colour tones are available on request.

Packaging sizes: 5/10/25 litres

Efficiency per litre: 4-5 m² per work step including overspray

Order no. hardener: **DR 4070**

Packaging sizes hardener: 0,5/1 litre

Order no. thinner: **DV 490**

Hesse Sanded-Metal Effect

Two-component PUR-Metallic lacquer based on acrylic resin, pigmented, light fast, fast drying with regular effect formation and excellent brilliance. For effects looking like brushed metal on structurally sanded carriers.

Fields of application

Unusual, creative accents for the exclusive interior decoration, furniture, kitchens etc.

Processing example

Accents in the interior decoration "brushed steel"

- Carrier: sanded, foiled chipboard or sanded MDF-board, pre-treated with filler
- 1 x 150 - 200 g/m² priming with Hesse PUR-Isolating filler DP 492-9343
MR 10 : 1 with PUR-Hardener DR 471
If required, add 10 % of thinner DV 490
- Drying at least for 16 h at 20°C
- Depending on desired effect sanding with grain 80 - 180 in one direction
- Apply 1 x 80 - 120 g/m² from both sides in the sanding direction with
- Hesse PUR-Sanded-Metal effect
DB 46777-M0858 stainless steel
MR 10 : 1 with PUR-Hardener DR 470
If required, add 5 - 10 % of thinner DV 490
- Finish after max. 2 h without sanding, optionally with Hesse PUR Multicoat lacquer
DE 559 glossy or DE 554 semi mat
MR 10 : 1 with PUR-Hardener DR 470
- Drying for at least 16 h at 20°C
- Packable after drying for at least 16 h at 20°C

Technical data

Mixture: **10 : 1 with Hesse PUR-Hardener DR 470**

Delivery viscosity: 33 - 40 sec. depending on colour tone / DIN 4 mm / 20°C

Processing time: 1 work day

Pot life: 1 work day

Application

Spraying: Depending on effect!

Best result is produced by cup gun;

Airless- and Airmix application should be tried by the processor with regard to the object.

Working viscosity: 15 - 18 sec. for spraying

Air spraying (cup):

Nozzle size: 1,8 - 2,0 mm

Spray pressure: 2,5 - 3,5 bar

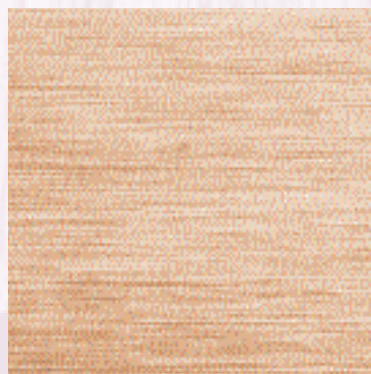
Important advices

In order to get the effect of brushed metal, the surfaces pre-treated with filler or coloured lacquer must be sanded as desired (grain 80-180). The coarser the sanding, the more intense is the effect.

Order information

Order-No.:

chrome	DB 46777-M0787
platinum	DB 46777-M0788
sparkling silver	DB 46777-M0789
silver	DB 46777-M0790
gold	DB 46777-M0809
stainless steel	DB 46777-M0858
Packaging sizes:	1/5/10/25 litres
Hardener:	DR 470
Packaging sizes hardener:	0,5/1/2,5 litres
Efficiency per litre:	6 - 8 m ² per work step including overspray
Thinner:	DV 490, DV 494
Retarder:	DV 499, add max. 5 %
Cleaning thinner:	NV 395



Hesse PUR Metallic lacquers, medium fine, mother of pearl, Reflex, Multicolor

Light fast, translucent 2-component Polyurethane lacquers in Metallic-effect, for top coating of light and dark colour tones, pre-treated with Hesse PUR Multicoat lacquer DE 55. Impressive effects with excellent depth effect and brilliance can be produced with Reflex- and Multicolour-lacquers on black carriers. Special adjustment „Mother-of-Pearl effect“ as top coat for light colour tones.

Fields of application

Hotel furnishings, shop fittings, sophisticated home furnishings, etc.

Processing examples for medium fine

Boarding, ash open-pore, grey metallic

- Wood sanding with grain 120-150, brush the pores well
- 2 x base coating with Hesse PUR Colour lacquer DB 555-7036, with intermediate sanding Mixture 10:1 with hardener DR 470
- Diluted with 20% thinner DV 490
- Intermediate sanding at least with grain 400
- 1 x top coating with 80-100 g/m² Hesse Metallic lacquer DU 457-99012 Mixture 10:1 with hardener DR 470
- Diluted with 10% DV 490
- Dust-dry after 20 - 25 min.
- Packable after drying for at least 16 h at 20°C

Reflex Effect

Carrier: MDF or Priming foil, treated with filler

- After drying and intermediate sanding application of Hesse PUR Colour lacquer DB 555-9005, mixture 10:1 with Hesse PUR-Hardener DR 470
- Drying at least for 16 h at 20°C
Lacquer sanding, from coarse to fine, max. grain 400
- 1 x even spraying with 80-100 g/m² Hesse PUR Metallic Lacquer DU 457-99015 coarse mixture 10:1 with hardener DR 470, diluted with 20 % thinner DV 490
- The differently coloured glitter effects in red, yellow, blue or green are produced by addition of 1 % Hesse Special Colour concentrate (see order information) to DU 457-99015
- Drying 2 h
- 2 x finishing in an interval of 10 - 60 min with 100 g/m² each of Hesse Brilliant lacquer DU 429, mixture 2:1 with hardener DR 484 + 20 % thinner DV 499
- If required, after one day of hardening the surface can be polished to high gloss.

Multicolor-Effect

MDF or Priming foil, treated with filler

- After drying and intermediate sanding with Hesse PUR Colour lacquer DB 555-9005, mixture 10:1 with Hesse PUR-Hardener DR 470
- Drying at least for 16 h at 20°C
- Lacquer sanding, from coarse to fine, max. grain 400
- 1 x even spraying with 80 - 100 g/m² Hesse Metallic lacquer DU 45457-99062 MR 10 : 1 with Hesse PUR-Hardener DR 4070
If required, adjust with Hesse PUR-Thinner DV 4900

- Drying 2 h
- 2 x finishing in an interval of 10 – 60 min with 100 - 120 g/m² each of Hesse PUR Acrylic-Brilliant lacquer DU 429
MR 2 : 1 with Hesse PUR-Hardener DR 484 + 20 % Hesse PUR-Thinner DV 499
- If required, after one day of hardening the surface can be polished to high gloss.

Technical data

10:1 with PUR-Hardener DR 470

Delivery viscosity: 20-24 sec/DIN 4 mm/20°C

Processing time: 1 work day at 20°C

Pot life: 1 work day at 20°C

Important advices

Spraying (addition of thinner required)

Air spraying (cup):

Nozzle size: 1,8-2,0 mm

Spray pressure: 2,5-3,5 bar

Partially depending on effect (!)

Important advices

Reflex and Multicolor effect can only be produced on black underground. Apply metallic-lacquers evenly. The application quantity will influence colour tone and effect.

Order information:

Order No.: (on all colours)

medium fine **DU 457-99012**

Order No.: (only on black)

coarse „Reflex Effect“ **DU 457-99015**

Order No.: (only on black)

„Multicolor-Effect“ **DU 45457-99062**

Order No. (only on light colours)

extra fine „Mother-of-Pearl-Lacquer“

DU 457-99060

Packaging sizes: 5/10/25 litres

Hardener: **DR 470/DR4070**

Packaging 0,1/0,5/1/2,5/

sizes hardener: 5/10 litres

Efficiency per litre: 7 m² per work step

Thinner **DV 490/DV4900**

Retarder: **DV 499**, max. 5 %

Cleaning thinner: **NV 395**

Colour concentrates for colouring the reflex effect:

yellow **CF 5010**

red **CF 5030**

blue **CF 5050**

green **CF 5062**

Hesse Hydro-PUR Scarab effect

Two-component Hydro-Acrylic-PUR effect lacquer with perspective-depending changing colours, water-dilutable, lightfast, contains special pigments.

Fields of application

In the whole field of interior completion for decorative effects

Processing example

Accent coating in the field of shop fittings

Carrier: foiled MDF board

- foil sanding with grain 240
- 1 x priming with 100-130 g/m²
Hesse Hydro PUR Colour lacquer
HDB 655-9005
MR 10 : 1 with hardener HDR 570
if required, dilute with 5 % water
- Drying at least for 3-4 hours at 20°C
- Slight sanding with grain 320 - 400
- 1 x priming with 100-130 g/m²
Hesse Hydro PUR Colour lacquer
HDB 655-9005 see above
- Drying at least for 16 hours at RT 20°C
- Slight sanding with grain 400-600
- 1 x 100-130 g/m² finishing with Hesse Hydro
PUR Scarab effect HDB 54504-M0979
MR 10 : 1 with hardener HDR 5090
dilute with up to 5 % water
- Drying at least for 16 hours at RT 20°C
- Smoothing with grain 600, Attention: to strong
sanding destroys the effect
- 1 x finishing with Hesse Hydro PUR Multicoat
lacquer HDE 547
MR 10 : 1 with hardener HDR 590
dilute with up to 5 % water
- packable after drying for at least 16 hours
at RT 20°C

Technical data

**10 : 1 with Hesse Hydro PUR-Hardener
HDR 5090**

Delivery viscosity: 45 +/-3 sec/ 4 mm/ 20°C

Processing time: 2 hours

Pot life: 2 hours

Application

Spraying:

Air spraying (cup):

Nozzle size: 1,7-2,0 mm,

Spray pressure : 3-4 bar

Airmix:

Nozzle size: 0,28-0,33 mm

Spray pressure: 80-100 bar

Atomizing pressure: 1,5-2,0 bar

Important advices

Depending on desired surface and carrier pre-treatment with e.g. HP 670-9343, HDP 540-9343 is possible. Wood with a great amount of ingredients like e.g. ash, which tends to discoloration if coated with pastel-coloured Hydro-Colour-systems, must be generally applied with hardener, exotic wood, e.g. Macassar or extremely resin-containing knotty pine must be pre-treated with PUR Isolating primer DG 572. If absolute ring- and colour abrasion resistance, or another degree of gloss is required, we recommend top coating with Hesse Hydro PUR Multicoat lacquer HDE 54.(degree of gloss).

Order information

Order no.:

Jade **HDB 54504-M0978**

Scarab **HDB 54504-M0979**

Maple XL **HDB 54504-M0980**

Other colour tones available, as well

Packaging sizes: 1/ 5 litres

Hardener: **HDR 5090**

Packaging sizes: 0,1/0,5/1/2,5/5/10
litres

Efficiency per litre: 6-8 m² each work step

Order no. Hydro-special cleaning agent:

HV 694 for rinsing and neutralization of
the devices

Order no. Hydro-Cleaning agent: **HV 697**
for removal of dried lacquers rests



Hesse Diamond Dust Effect

Extremely resistant, structured metallic-effect with pleasant velvety feeling. A clear finish is not required. The effect develops only on black underground.

Fields of application

Unusual, creative accents for hardwearing surfaces in the field of interior completion, e.g. office furniture.

Processing example

Wall covering, accents by Diamond Dust effect

- Sand priming foil, foiled chipboard or MDF-boards well
- 1 x priming with 150 - 200 g/m²
Hesse PUR-Isolating filler DP 491-9005
4 : 1 parts by volume with Hesse PUR-Hardener DR 405
diluted with 10 % Hesse PUR-Thinner DV 490
- Drying at least for 16 h at 20°C
- sanding with grain 280 - 320
- 1 x coating with 150 - 200 g/m²
Hesse Diamond-Dust-effect lacquer
DB 44660-(colour tone)
MR 5 : 1 with Hesse PUR-Hardener DR 4075
or alternatively
4 : 1 with Hesse PUR-Hardener DR 471
diluted with 10 % Hesse PUR-Thinner DV 490
- Drying: at least for 16 h at 20°C

Technical data

5:1 with PUR-Hardener DR 4075 or alternatively

4:1 with PUR Hardener DR 471

Delivery viscosity: 20-24 sec/DIN 4 mm/20°C

Processing time: 1 work day at 20°C

Pot life: 1 work day at 20°C

Application

Spraying (addition of thinner required)

Air spraying (cup):

Nozzle size: 1,8-2,0 mm

Spray pressure : 2,5-3,5 bar

Important advices

Apply Hesse Diamond-Dust-effect lacquer DB 44660-(colour tone) evenly; different film thicknesses will change the colour tone and lead to clouds!

Order information

Order no.:

anthracite / silver **DB 44660-M0025**

grey / silver **DB 44660-M0024**

Packaging sizes: 10/25 litres

Hardener: **DR 4075**

Packaging sizes hardener: 2,5 litres

Efficiency per litre: 3-4 m² each work step

Thinner **DV 490**

Hesse PUR Pearl-Structure

Pigmented, lightfast, two-component-PUR-Acrylic resin-lacquers with pearl structure of different degrees of fineness.

Fields of application

Effect coating for hardwearing surfaces in the field of interior completion, like e.g. office furniture, tables, for kitchens, objects etc., on suitable base coats; after slight sanding, direct coating on many priming foils is possible, as well.

Processing example

Shop fittings, decoration-objects, MDF, pearl-structure, blue

- Treat MDF with filler and dry as prescribed
- sanding with grain 220-320
- 1 x coating with 120-150 g/m²
Hesse Pearl-structure, medium DB 483-5022
Mixture 5:1 with hardener DR 470
- packable after drying for at least 16 h at 20°C

Technical data

10:1 with PUR Hardener DR 470,

for higher demands also

5:1 with PUR-Hardener DR 470

Working viscosity: 25-35 sec /4 mm/20°C

Processing time: 1 work day at 20°C

Pot life: 1 work day at 20°C

Application

Spraying (addition of thinner required)

Air spraying (cup):

Nozzle size: 2,0-2,5 mm

Spray pressure: 2,5-3,5 bar

Important advices

Depending on desired surface result and carrier pre-treatment with e.g. DP 491-9343, DP 492-9343 or other applicable fillers is possible. Absolute ring- and colour abrasion resistance, or another degree of gloss is achieved by top coating after max. 4 hours without sanding with diluted Hesse DE 56., DE 55. or for special effects with metallic lacquers like e.g. DU 457-99012 or DU 457-99015.

Order information

Order no.:

fine **DB 484-(colour tone)**

medium **DB 483-(colour tone)**

course **DB 482-(colour tone)**

Packaging sizes: 5/10/25 litres

Order no. hardener: **DR 470**

Packaging 0,1/0,5/1/2,5/

sizes hardener: 5/10 litres

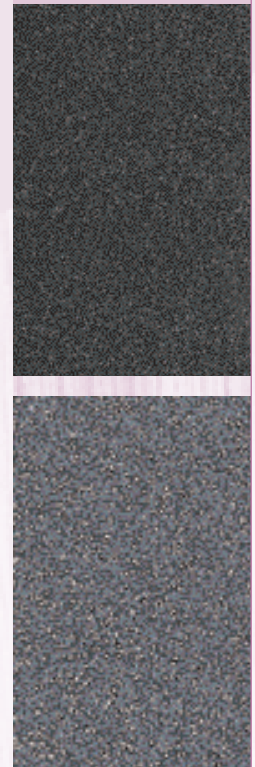
Efficiency per litre: 3-4 m² each work step

Including overspray

Order no. Thinner: **DV 490, DV 494**

Retarder: **DV 499**, addition max. 5 %

Colour tones: available in many colour tones



Hesse Icecrack-Effect

The surface result of the Icecrack-Effect really looks like cracking ice. The cracks can be especially emphasized by subsequent application of coloured wiping stain.

Fields of application

Unusual, creative accents for surfaces in the field of interior completion, e.g. office furniture, tables, hotel- and shop fittings, (sophisticated home furnishings)

Processing example

Carrier: treat priming foil, foiled chipboard or MDF-boards with filler as prescribed

- Drying at least for 16 h at 20°C
- sanding with grain 280 - 320
- 1 x coating with Hesse PUR Colour lacquer DB 555-colour tone, Mixture 10:1 with hardener DR 470
- Drying 1-5 hours, the shorter the drying time and higher the application quantity, the coarser are the cracks, no intermediate sanding
- 1x coating with Hesse Icecrack-effect lacquer ZD 3993, MR 1:1 with hardener DR 4032 the cracks are formed during the hardening process. The formation is depending on the application quantity (the thinner, the finer are the cracks)
- Drying at least for 16 h
- After the drying, the lacquer cracks can be accentuated with Hesse Wiping stain TW 130-... , TD 4215-9957 (gold) or TD 4215-99573 (silver)
- Drying 1-2 h at 20°C
- Final coating with Hesse PUR Multicoat lacquer DE 55. (degree of gloss), Mixture 10:1 with hardener DR 470 or Hesse Acrylic-Brilliant lacquer DU 429, Mixture 2:1 with hardener DR 484
- If required, the surface can be polished to high gloss after 3 days of hardening, see special technical information for polishing.

Technical data

1:1 with PUR-Hardener DR 4032

Working viscosity: 20-24 sec/DIN 4 mm/20°C

Processing time: 1 work day at 20°C

Pot life: 2 work days at 20°C

Application

Spraying: (if required, add thinner)

Air spraying (cup):

Nozzle size 1,5-1,8 mm

Spray pressure 2,5-3,5 bar

Airless-spraying:

Nozzle size 0,23-0,28 mm

Spray pressure 100-150 bar

Airmix:

Nozzle size 0,23-0,28 mm

Spray pressure 60-100 bar

Atomizing pressure 3-4 bar

Important advices:

Attention: Hesse Icecrack ZD 3993 is only conditionally lightfast, for this reason we advise against application on pastel colours

Order information

Order no.:	ZD 3993
Packaging sizes:	1/5/10 litres
Hardener:	DR 4032
Packaging sizes hardener:	1 litre
Efficiency per litre:	7 m ² each work step
Thinner	DV 490



Hesse Skintex effect

Cracking lacquer, especially leather-coloured, finished with PUR top coats with soft-feeling effect

Fields of application

Unusual, creative accents in the field of interior completion or for object furniture

Skintex, soft pastel:

Carrier: Prescribed filling of priming foil, foiled chipboard or MDF-surfaces

- Drying at least for 16 h at 20°C
- sanding with grain 280 - 320
- 1 x coating with 120 - 150 g/m²
Hesse CN Pigment lacquer EB 132-82868
- Drying for 30-60 minutes
- 1 x 80-120 g/m² finishing with Hesse CN Cracking lacquer NB 2605-82694 + 30-40 % thinner DV 490 with cup gun nozzle 2mm
- Drying at least for 16 h RT 20°C
- 1 x 100-120 g/m² finishing with Hesse PUR Soft Grip Effect DU 44130
MR : 5 : 1 with hardener DR 4078
- Drying at least for 16 hours at RT 20 °C

Skintex brown, smooth

- Carrier: Prescribed filling of priming foil, foiled chipboard or MDF-surfaces
- Drying at least for 16 h at 20°C
- Sanding with grain 280 - 320
- 1 x coating with 120 - 150 g/m²
Hesse CN Pigment lacquer EB 132-8017
- Drying for 30-60 minutes
- 1 x 80-120 g/m² finishing with Hesse CN Cracking lacquer NB 2605-82959 + 30-40 % thinner DV 490, cup gun nozzle 2mm
- Drying at least for 2-3 h at RT 20°C
- 1 x 100-120 g/m² finishing with Hesse PUR Multicoat lacquer DE 552, MR 10 : 1 with Hesse PUR Hardener DR 470
- Drying at least for 16 hours at RT 20°C

Important hints

Please pay attention to the latest „Technical Data Sheets“ and safety data sheets of the listed single products; in particular see the hints for cleaning and maintenance of Soft Grip surfaces. Surfaces can be repaired conditionally only.

Order information

Required products:

Hesse PUR Acrylic-Isolating filler	DP 492-9343
Hesse CN Pigment lacquer	EB 132-colour tone
Hesse CN Cracking lacquer	NB 2605-colour tone
Hesse PUR Soft Grip Effect	DU 44130 or
Hesse PUR Multicoat lacquer	DE 55.(degree of gloss)

Hesse Spider's web effect

By using the Hesse Spider's web effect, one can easily convey the surface impression of a Spider's web. Like a spider's web, the 1C- Colour lacquer covers an underground of a different or same colour. By combinations with metallic lacquers, there are many more attractive design possibilities, like e.g. leaf gold effect etc.

Fields of application

Hotel- and shop fittings, upmarket furnishings, behind-glass coatings etc.

Application example

Carrier: Prescribed filling of priming foil, foiled chipboard or MDF-surfaces

- After drying and intermediate sanding, finish with Hesse PUR Colour lacquer DB 555-colour tone, Mixture 10:1 with hardener DR 470
- Drying at least for 16 h at 20°C
- Lacquer sanding with grain 280 - 320
- 1 x evenly spraying with Hesse Spider's web effect DB 46100-colour tone
- Drying 2-3 h
- 1 x finishing with Hesse PUR Multicoat lacquer DE 55.(degree of gloss), Mixture 10:1 with hardener DR 470
- Drying at least for 16 h at 20°C

Application

Spraying (addition of thinner required)

Air spraying (cup):

Nozzle size 2,0 mm

Spray pressure 2-4 bar

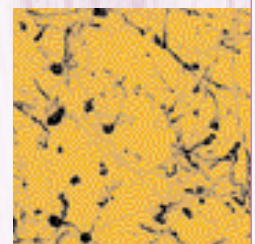
Important advices

The effect (thread formation) is depending on the spray pressure and from the distance between the spray gun and the work piece. Finish with suitable PUR lacquers required, e.g. Hesse PUR Multicoat lacquer

Order information

Order no.:

White	DB 46100-100
Black	DB 46100-102
Ochre	DB 46100-103
Green	DB 46100-104
Oxide red	DB 46100-106
Red	DB 46100-108
Blue	DB 46100-110
Yellow	DB 46100-201
Gold	DB 46100-M0725
Packaging sizes:	1/5 litres
Efficiency per litre:	15-20 m ² each work step depending on effect concentration
Thinner	DV 490



Hesse PUR Nap-Effect

Pigmented, lightfast two-component-PUR Acrylic resin lacquer with nap structure for interesting colour effects. The effect is produced by the spray technique.

Fields of application

Effect coating for hard-wearing surfaces in the field of interior completion, like e.g. office furniture, tables etc.

Application example

- Counter, nap structure, dusky pink, silky mat
- Carrier: Prescribed filling of priming foil, foiled chipboard or MDF-surfaces
 - Drying at least for 16 h at 20°C
 - sanding with grain 280 - 320
 - 1 x coating with Hesse PUR Colour lacquer DB 555-3014
Mixture 10:1 with hardener DR 470
 - Drying 3 – 5 h at 20°C, no intermediate sanding
 - 1 x Hesse PUR-Nap-Structure DB 494-3014
MR 10 : 1 with PUR-Hardener DR 470, with reduced spray pressure (0,5 – 1,0 bar) „spotting“
 - 1 x finishing with Hesse PUR Multicoat lacquer DE 554, MR 10 : 1 with PUR-Hardener DR 470

Technical data

10:1 with PUR-Hardener DR 470

Delivery viscosity: 50 - 60 sec /DIN 6 mm/20°C depending on colour tone (for spraying of the structure)
Processing time: 1 work day at 20°C
Pot life: 1 work day at 20°C

Verarbeitung

Spraying:
Air spraying (cup):
Nozzle size: 2,0 - 2,5 mm
Spray pressure: 0,5 - 1,0 bar

Important advices

Before application of the nap effect, the object must be covered with an opaque colour tone e.g. based on DB 555-colour tone. If absolute ring- and colour abrasion resistance or another degree of gloss is required, finish thinly with diluted Hesse PUR Multicoat lacquers DE 56.(degree of gloss) or DE 55.(degree of gloss) maximum after 4 hours without sanding.

Order information

Order no.:	DB 494-(colour tone)
Packaging sizes:	5/10/25 litres
Efficiency per litre:	6 - 8 m ² each work step including overspray
Hardener:	DR 470
Packaging sizes hardener:	0,1/0,5/1/2,5/5/10 litres
Thinner:	DV 490
Cleaning thinner:	NV 395
Colour tones:	available in many colour tones

Hesse PUR Magnet-effect

Two-component PUR-Acrylic resin metallic lacquer, brilliantly dark pigmented with iron pigments, which can be oriented by magnetism. You can produce patterns and writings of incredible three-dimensionality and fascinating depth effect.

Fields of application

For decorative interior completion, mainly on glass.

Application example

- Decorative glass coating reddish translucent:
- Carrier: Glass, degrease with Hesse Cleaning thinner ZD 101
 - 1 x 150 g/m² application with Hesse Magnet-effect lacquer DB 46204-M0658 + 40 % Colour concentrate DZ 4990-05764
MR 5 : 1 with PUR-Hardener DR 4076-0001 + 40 % Thinner DV 494
 - Let magnets or magnet foil in desired effect behind glass react on the wet coating, if required, fasten magnet foil on the back side of the glass before application
 - Drying at least for 16 hours at RT 20°C

Technical data

5:1 with PUR-Hardener DR 4076-0001

Delivery viscosity: 37 - 43 sec depending on colour tone / DIN 4 mm / 20°C
Processing time: 1 work day
Pot life: 1 work day

Application

Spraying: Depending on the effect! Best result is achieved by cup gun; Airless- and Airmix processing should be tested by the user with regard to the object.

Working viscosity: 15 - 18 sec for spraying with cup gun, Addition of thinner DV 494 required
Air spraying (cup):

Nozzle size: 1,8 - 2,0 mm
Spray pressure: 2,5 - 3,5 bar

Important advices

Coloration is possible with CF and CP 71.. concentrates. Consider additions of colour concentrates, when adding thinner! The effect can only be produced on the wet coated surface.

Order information

Order no.:	DB 46204-M0658
Packaging sizes:	1/5/10/25 litres
Hardener:	DR 4076-0001
Packaging sizes hardener:	0,1/0,5/1/2,5 litres
Efficiency per litre:	5 - 7 m ² each work step including overspray
Thinner:	DV 494
Retarder:	DV 499 , add max. 5 %
Cleaning thinner:	NV 395

Hesse effect: Colour lacquer, antique Mediterranean

Multi-colour surface design with colour lacquers and wiping stains in Mediterranean style.

Fields of application

For hard-wearing surfaces in the field of interior completion and shop fittings, for hotel furnishings etc.

Processing example

Interior completion, Mediterranean green

- Prescribed priming of priming foil, foiled chipboard, fine-porous wood or MDF-surfaces
- Drying at least for 16 h at 20°C
- Sanding with grain 280 - 320
- 1 x 130-150 g/m² application with Hesse PUR Colour lacquer DB 555-6021, MR 10 : 1 with Hesse PUR-Hardener DR 470, if required, add 10 % thinner DV 490
- Drying 2-4 h at RT 20°C
- 1 x 30- 40 g/m² application with Hesse PUR Colour lacquer DB 555-6019, MR 10 : 1 with Hesse PUR-Hardener DR 470 + 30-50 % thinner DV 490
- Drying at least for 16 h at RT 20°C
- Sand to the desired effect with very coarse (grain 80) and fine sanding paper (grain 280) (sand scratches, edges and corners down to the base colour)
- 1 x thinly spraying of Hesse Wiping stain TD 4130-9343 with cup gun or apply by wiping with cloth
- Drying 60 minutes at RT 20°C
- Sand to effect with steel wool, sanding sponge, so that residues of the wiping stain remain irregularly on the surface
- 1 x irregular application of dots by Hesse Wiping stain TD 4220-8764, if required, dilute with TV 4107 before (hold cup gun far apart from the object, reduce spray pressure to max. 1 bar)
- 1 x 100-120 g/m² finishing with Hesse PUR Multicoat lacquer DE 552 MR 10:1 with hardener DR 470
- Drying at least for 16 h at RT 20°C

Important advices

Please pay attention to the latest technical data sheets and safety data sheets of the listed single products.

Order information

Required products

Hesse PUR Isolating filler	DP 492-9343
Hesse PUR Colour lacquer	DB 555-(Base colour)
Hesse PUR Colour lacquer	DB 555-(accent colour)
Hesse Wiping stain	TW 4130-9343
Hesse Wiping stain	TD 4220-8764
Hesse PUR Multicoat lacquer	DE 552

Hesse Effect: Conifer wood, antique

Combined stain- and colour lacquer technique on brushed conifer wood in antique effect (country style)

Fields of application

For hardwearing surfaces in the field of interior completion, shop and hotel fittings etc.

Processing example

Hotel furnishing, spruce, white, antique

- Carrier: Spruce, knotty spruce as solid wood or veneer with at least 0,7 mm, better 1 mm thickness
- Brush soft annual rings well, wood sanding with grain 100-120
- 1 x spraying evenly wet
Hesse Precious wood stain BE 18-70385
- Drying at least for 3 h at 20°C
- 1 x 80-100 g/m² priming with
Hesse PUR Multicoat lacquer DE 552
MR 10 : 1 with DR 470 + 10 % DV 490
- Drying 1-2 hours, slight intermediate sanding with grain 320, depending on desired surface effect
- 1 x 60-80 g/m² application with
Hesse PUR Colour lacquer DB 555-9010
MR 10 : 1 with DR 470 + 20-30 % DV 490
- Drying at least for 16 hours at RT 20°C
- Sand with sanding sponge or sanding paper to the desired effect "use traces"; especially sand edges and profiles, so that the stain is partially visible, again.
- 1 x very thin spraying with Hesse wiping stain TD 4220-8764 wipe, if required.
- Drying 2-3 hours at RT 20°C
- Sand with sanding sponge or steel wool to the desired effect
- 1 x 100-120 g/m² finishing with
Hesse PUR Multicoat lacquer DE 552
MR 10:1 with DR 470
- Drying at least for 16 h at RT 20°C

Important advices

Please pay attention to the latest technical data sheets and safety data sheets of the listed single products.

Order information

Required products

Hesse Precious wood stain	BE 18-colour tone
Hesse PUR Colour lacquer	DB 555-(colour tone)
Hesse Wiping stain	TD 4220-8764
Hesse PUR Multicoat lacquer	DE 552

Hesse effect: Putty technique

With this bicolour surface effect one can reproduce the impression of old putty techniques. Also modern designs, like Jeans effect, are possible.

Fields of application

Unusual, creative accents for hardwearing surfaces in the field of interior completion and shop fittings, for hotel fittings etc.

Processing example

Carrier: Prescribed sealing of priming foil, foiled chipboard or MDF-surfaces

- Drying at least for 16 h at 20°C
- Sanding with grain 280 – 320
- 1-2 x application of the base colour with 150-200 g/m² Hesse PUR Colour lacquer DB 555-(colour tone)
MR 10 : 1 with hardener DR 470
- Let it begin to dry for some minutes, apply with a Japanese spatula or other suitable palette knives in the desired effect
- Drying at least for 16 h
- 1x thin coating with accent colour max. 50-60 g/m² Hesse PUR Colour lacquer DB 555-(colour tone), MR 10 : 1 with DR 470 + 20-30 % Hesse PUR Thinner DV 490
- Drying for 3-5 hours
- Sand the surface with grain 150-280 to the desired effect
- 1x finishing with 100 - 150 g/m² Hesse PUR Multicoat lacquer DE 55.(degree of gloss)
MR 10 : 1 with DR 470
- Drying at least for 16 h at 20°C

Important advices

Test coating required! Please pay attention to the latest technical data sheets and safety data sheets of the listed single products.

Order information

Required products

Hesse PUR Acrylic Isolating filler **DP 492-9343**

Hesse PUR Colour lacquer

DB 555-(base colour tone)

Hesse PUR Colour lacquer **DB 555-(accent colour)**

Hesse PUR Multicoat lacquer **DE 55 (degree of gloss)**

Hesse Line-effect

Effect design by manually applied line effects with Hesse Wiping stain. Lines are set off against the underground; also for antique effects

Fields of application

Hotel- and shop fittings, upmarket furnishings etc.

Processing example

Carrier: Prescribed sealing of priming foil, foiled chipboard or MDF-surfaces

- Drying at least for 16 h at 20°C
- Sanding with grain 280 - 320
- 1 x application with Hesse PUR Colour lacquer DB 555-colour tone,
Mixture 10:1 with hardener DR 470
- Drying at least for 16 h at 20°C
- Sanding: slightly planing (grain 400)
- 1x thin application 50-80 g/m², of Hesse Wiping stain line effect TD 4217-colour tone apply with flat brush to effect
- Drying at least for 16 h at 20°C
- 1x finishing with 120-150 g/m² Hesse PUR Multicoat lacquer DE 55.(degree of gloss)
MR 10:1 with DR 470, + 10 % thinner DV 490
- dust dry after 10-15 minutes
- packable after drying for 16 h at 20°C

Technical data

Delivery viscosity:

12 sec / DIN 4 mm / 20°C

Application

Spraying

Air spraying (cup):

Nozzle size: 1,5 - 2,0 mm

Spray pressure: 1,0 - 1,5 bar

Subsequently draw the line effect by flat brush

Important advices

Test coating required! Wiping stain must dry at least over night. Finish with applicable PUR lacquers required, e.g. Hesse PUR Multicoat lacquer.

Order information

Order no.: **TD 4217-(colour tone)**

limited colour range

Packaging sizes: 1/5/10 litres

Efficiency per litre: 4 m² each work step including overspray

Hesse effect: Marble

In real marble colours, marble-effect lacquers look very authentic, however with fantasy colours, they are a perfect instrument to realize highest demands of design.

Fields of application

Unusual, creative accents for hardwearing surfaces in the field of interior completion, e.g. office furniture, tables, hotel fittings etc. Also applicable as coating behind glass after previous base coating with Base coat for glass DG 4744 (see working process root timber)

Processing example

- Carrier: Prescribed priming of priming foil, foiled chipboard or MDF-surfaces
- Drying at least for 16 h at 20°C
- Sanding with grain 280 - 320
- 1 - 2 x application of 100 -150 g/m² in the base colour tone with Hesse PUR Colour lacquer DB 555-(colour tone)
MR 10 : 1 with Hesse PUR-Hardener DR 470 diluted with 10 % Hesse PUR-Thinner DV 490
- Drying at least for 16 h at 20°C
- Sanding: slightly planing (grain 400)
- Hesse PUR Colour lacquer DB 555-(colour tone) in the desired marbling colour tones
MR 10 : 1 with hardener DR 470
Subsequently dilute 1 : 5 with DV 490
- Apply in irregular lines 3 - 10 g/m² in a distance of 15-20 cm by cup gun (circular section jet).
- Crumpled greaseproof paper to be wetted with Hesse marble effect solution DV 4991 and stamp the patinated surface with it.
- Drying: 1 - 2 h
- Subsequent treatment with Hesse PUR Multicoat lacquer DE 55 (degree of gloss) or Hesse PUR Acrylic-Brilliant lacquer DU 429

Important advices

With the marble effect, every surface is designed individually; before application, the processor should make himself familiar with the special technique. Please pay attention to the latest technical data sheets and safety data sheets of the listed single products.

Order information

Required products:

Hesse PUR Acrylic-Isolating filler **DP 492-9343**

Hesse PUR Colour lacquer **DB 555-**
(colour tone) in various colour tones

Hesse PUR Multicoat lacquer **DE 55**
(degree of gloss) or

Hesse PUR Acrylic-Brilliant lacquer **DU 429**

Hesse Marble effect solution **DV 4991**

Hesse effect: Root timber look

Effect design in root timber look, mainly for coatings behind glass

Fields of application

Unusual, creative accents in the field of interior completion, for hotel fittings etc.

Processing example

Bar cabinet hotel (behind glass coating)

- Degrease glass surface with Hesse Cleaning thinner ZD 101
- 1 x priming with 80 - 100 g/m²
Hesse PUR-Special base coat for glass DG 4744
Mixture 5 : 1 with Hesse PUR-Hardener
DR 4076-0001
- Drying at least for 16 h, max 3 days
- Dilute Hesse translucent concentrates ZD 1-17 and ZD 1-20 with DV 490;
- Spray ZD 1-17 thinly and drop ZD 1-20 sparingly with a pipette
- Thinner DV 4991, wipe and dab with natural sponge and if required, parchment paper to effect
- Drying for 1-2 hours
- 1 x 100-120 g/m² finishing with Hesse PUR Colour lacquer DB 555-103
MR 5 : 1 with Hesse PUR-Hardener
DR 4076-0001
- Drying at least for 24 hours

Conglutination

Make the gluing of coated glass plates after sufficient hardening of the coating; Minimum drying time 5 days at RT 20°C.

Important advices

With the root timber effect, every surface is designed individually; before application, the processor should make himself familiar with the special technique. Please pay attention to the latest technical data sheets and safety data sheets of the listed single products.

Order information

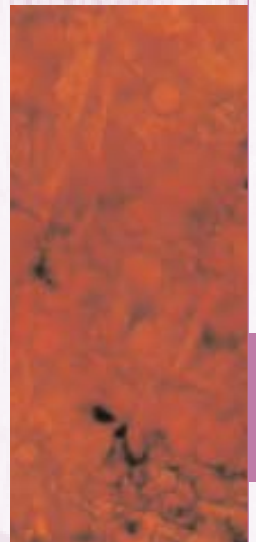
Required products:

Hesse PUR-Special base coat **DG 4744**

Hesse Colour concentrate for translucent lacquers **ZD 1-17**

Hesse Colour concentrate for translucent lacquers **ZD 1-20**

Hesse PUR Colour lacquer **DB 555-103**



Hesse effect: Raindrop

Impressive effect, imitating a lacquer surface wetted with water drops.

Fields of application

Unusual, creative accents for surfaces in the interior completion, e.g. for office furniture, tables etc. Especially applicable on dark full colour tones like dark blue, dark green, respectively black.

Processing example

Carrier: Prescribed priming of priming foil, foiled chipboard or MDF-surfaces

- Drying at least for 16 h at 20°C
- Sanding with grain 280-320
- 1 x lacquering with 100-150 g/m² of Hesse-PUR-Colour lacquer DB 555-(base colour)
MR 10:1 with Hesse PUR hardener DR 470 + 10 % of Hesse PUR thinner DV 490
- Drying 2 h at 20°C
- Further application without intermediate sanding
- Regular application of Hesse effect agent DZ 4991 by cup gun, nozzle 2 mm and low pressure (dropping)
- Straight after that, one side of the drops is misted (cup gun, nozzle: 1,2-1,5 mm) one side light, the other side dark, so that the three-dimensionality of the drops is emphasized
E.g. one side is misted with Hesse PUR Colour lacquer DB 555-102 black
MR 1 : 5 with DV 490, subsequently this mixture of coloured lacquer and thinner is mixed 1 : 1 with DR 470

- Turn the surface by 180°
- Other side with Hesse Metallic-Colour concentrate DZ 4990-99042 silver, MR 1 : 1 diluted with
DV 490 or optionally with
DZ 4990-99211 red
DZ 4990-99212 green
DZ 4990-99210 golden
DZ 4990-99042 silver
- Store surface horizontally
- Drying for at least 16 h at 20°C
- Apply 2 x within an interval of 10-60 min with 100 - 120 g/m² each e.g. with Hesse PUR-Acrylic-Brilliant lacquer DU 429
MR 2 : 1 with Hesse PUR-Hardener DR 484 + 20 % Hesse PUR-Thinner DV 499
If required, the surface can be polished to high gloss already after 1 day of drying.

Important advices

The effect can only be produced on horizontal, flat surfaces (no rounded edges).

Nozzle size and distance to the carrier will influence the size of the drops.

Shading of the drops with reduced spray pressure (0,5-1,5 bar) always from one side in an obtuse angle. Store the surfaces in a horizontal position. The best depth effect is produced by finishing with Brilliant lacquer.

Order information

Order no.:

Required products:

Hesse PUR Acrylic-
Isolating filler **DP 492-9343**

Hesse PUR Colour lacquer **DB 555-(base colour)**

Hesse PUR
Colour lacquer **DB 555-(shading
colours)**

Hesse Effect solution **DZ 4991**

Possibly

Hesse Colour concentrates **DZ 4990-(colour tone)**

Hesse PUR Acrylic-Brilliant lacquer **DU 429**



Functional surfaces

Hesse PUR Multicoat lacquer, antibacterial

From now on, our well-trying, resistant two-component-PUR Multicoat lacquer based on acrylic resin, DE 55x (degree of gloss) is available with antibacterial outfit. The anti-microbial activity has been tested according to JIS Z 2801-2000, test number 305.826/2.

Hesse PUR Multicoat lacquer, antibacterial allows the production of surface coatings with improved hygienic features. This functional characteristic is based on the addition of silver NANO particles.

Fields of application

A wide field of application is especially opened for sectors with a lot of coming and going and for facilities, which absolutely need hygienic surfaces, like e.g. furniture and objects for hospitals, medial practices, bakeries, restaurants, for kitchens and bathrooms, etc.

Order information

Order no.:

Dull mat	DEM 550-AB
mat	DEM 552-AB
semi mat	DEM 554-AB
silky gloss	DEM 557-AB
glossy	DEM 559-AB
Mixing ratio 10 : 1 with hardener DR 470	

Hesse PUR-Magnetic filler

This well filling, pigmented two-component PUR-Base coat with ferromagnetic effect allows the production of surfaces with magnetic bonding on conventional wood materials. After sufficient drying, the surface can be finished with coloured Hesse CN- or PUR-lacquers. The magnetic effect is operatively depending on the application quantity – please consider the corresponding technical data sheet. The Hesse PUR-Magnetic filler was specially developed for base coating of MDF or foiled chipboards.

Fields of application

Here, a wide field of application is opened – ideally for offices, schools and kindergartens, hotels, kitchens, working rooms etc.

Order information:

Order no.:

dull mat	DPM 4774-77777
Mixing ratio, by volume:	5 : 1 with hardener DR 4070

Hesse PUR Multicoat lacquer DE 56., tested for cytotoxicity

DE 56., the high solid, lightfast and machine sandable two-component PUR-Multicoat lacquer based on acrylic resin, fulfils as mat and semi mat version the test for cytotoxicity according to DIN EN ISO 10993-5 and is rated as non-cytotoxic with test certificates ICO 200509-00388C and –00365C.

This biological safety test proves: Even if directly contacted with skin, there is no risk that toxicologically tested surfaces will damage living cells.

Fields of application

As fields of application, all objects and furniture are imaginable, which are exposed to direct skin contact or which need a proof for biological compatibility, like e.g. for hospital beds, furnishings in the social sector, kindergartens etc.

Order information

Order no. :

mat	DE 562
semi mat	DE 564
Mixing ratio	10 : 1 with hardener DR 470

Hesse Anti-Slip lacquer

This two-component PUR-Top coat is characterized by its non-slipping character. Compared to conventional surfaces, objects, which are put on a surface treated with this lacquer, can only be moved with much more effort. Consequently, the unintentional slipping on a surface can be prevented.

Fields of application

Possible fields of application are the inside coatings of drawers, coat hangers, trays, wooden chairs etc.

Order information:

Order no.:

glossy	DU 44709-0002
Mixing ratio:	100 : 15 with hardener DR 4078

